

1.7L KETTLE JUG WITH AUTO SWITCH  
MC117



# 1.7 LITRE KETTLE JUG



MODEL: MC117  
INSTRUCTION MANUAL



## Parts & Description



## **Warnings**

### ATTENTION :

Read this booklet carefully as it contains important instructions for a safe installation, use and maintenance.

Important instructions to be kept for future reference.

The following basic precautions should always be followed when using electrical appliances:

1. Read all instructions before using the appliance.

### **The Appliance**

2. This appliance must be used only for the purpose it was expressly designed; any use NOT complying with the instructions contained in the manual is considered inappropriate and dangerous. The manufacturer is NOT responsible for possible damages caused by the inappropriate and/or unreasonable use.
3. The appliance is designed for heating water only. DO NOT put other liquids into the appliance. Different liquids have different boiling points, with volatile liquids having boiling points lower than 100°C, the boiling point of water.
4. The installation/assembly of the appliance will be made in accordance with the indications of the manufacturer. A wrong procedure may cause damages to persons, animals or objects, for which the manufacturer cannot be considered responsible.
5. Before use, check the integrity of the appliance and power cable. DO NOT operate the appliance when its housing is damaged or if the appliance has been dropped. In case you are not sure, contact a qualified person. If the power cable is damaged, it must be replaced by the manufacturer or its service agent or a qualified technician in order to avoid a shock hazard.
6. Before powering the appliance, make sure the rating (voltage and frequency) corresponding to the grid and the socket is suitable for the plug of the appliance, and that the wall socket is properly grounded. This appliance is fitted with an earth wire for extra safety.
7. Avoid the use of adapters and/or extension cables; if their use is absolutely necessary, use only materials in compliance with the current safety regulations and according to the electrical parameters of the adapters.
8. The appliance must NOT be switched on using external timers and/or other remote control appliances which are not specified in this manual.
9. Only use original components & accessories provided by the manufacturer. Any non-original component or accessory NOT recommended by the manufacturer may cause injuries to persons or damage to the appliance. DO NOT use other Bases or Kettle Jugs belonging to other models from the same manufacturer or

other manufacturers. Doing so will void the warranty and may cause serious injury.

10. The packing materials (plastic bags, expanded polystyrene, etc.) must be kept out of the reach of children or disabled persons since they represent potential sources of danger.

### **Location**

11. This appliance is NOT suitable to be used or stored near heat sources (open flame, ovens, heaters, stoves, etc.) and/or in an explosive environment (in the presence of flammable substances such as gas, vapour, mist or dust, in atmospheric conditions when, after ignition, the combustion is spread in the air). Items containing these substances should never be placed in the appliance, and never be used to clean the appliance in order to avert the risk of fire or explosion.
12. The appliance should NOT be placed on a surface, or in the vicinity of objects, which can be damaged by heat such as carpets or plastics. During operation, as heat is transferred away from the appliance, the surface that the appliance is placed upon as well the surface immediately above or adjacent to it may become very hot. There should be at least 10 cm of free space from the back, left & right sides and at least 20 cm from the top of the appliance to allow adequate air circulation. Never put things on top of the Lid. DO NOT locate multiple portable socket outlets or power supplies at the bottom or rear of the appliance. Never use the appliance near curtains or textiles. If the appliance is operated on wooden furniture, use a protective pad to prevent damage to delicate finishes.
13. Avoid placing the power cable on abrasive or sharp surfaces or in positions where it can be damaged easily. Avoid placing heavy objects on the cable. The cable must NOT be placed under carpets, or covered with throw rugs, runners or similar. Arrange the cable away from the high traffic area, and where it will NOT be tripped over. DO NOT pull or carry the appliance by the cable.
14. DO NOT use or store the appliance outdoors. Store and use the appliance only indoors, or in any case, protected from weathering such as rain, direct radiation of the sun and dust.

### **Operation**

15. If you are using the appliance for the first time, you should:
  - a. Clean the interior of the Kettle Jug with water & detergent with a non-abrasive sponge. DO NOT use metal scouring pads nor use solvents like paint thinners or acetone.  
  
Notice: you should NOT use a dishwasher to clean the Kettle Jug or Base.
  - b. The Filter has been installed in the Kettle before shipping. If it is not in place, install the Filter before using the Kettle by placing the Filter in the slot before the spout under the tab of the Lid. Push gently and the Filter will snap into

position.

- c. Fill the Kettle Jug with clean water to maximum capacity, and place it on the Base. Press the ON/OFF Switch up. Close the Lid.
- d. Place the Base on a dry, horizontal, stable and heat-resistant surface. Plug the power cable attached to the Base into the wall socket. Switch the wall socket ON. Press the ON/OFF Switch down. Heating will commence immediately.
- e. The appliance switches off automatically several seconds after water has started boiling. Switch the wall switch OFF and unplug the power cable from the wall socket. Wait for the water to cool after boiling. Discard the water.
- f. Rinse the Lid and internal surface of the Kettle Jug under running water. Be careful NOT to allow water to enter the internal parts of the Kettle Jug or the Base. Thereafter the appliance is safe to use.
- g. Make sure to remove any label or protective sheet which may prevent its proper functioning.

DO NOT:

- cover the appliance during functioning;
  - obstruct totally nor partially the Spout;
  - insert objects or body parts inside the protection cover of the appliance;
  - overfill water (beyond the MAX mark on the container) to avoid overflow of hot water;
  - place the appliance and heat it by any other means, e.g. in a microwave, oven or on a frying pan filled with water and placed directly on a gas stove, as the plastic components can be deformed and the glass is likely to crack as a result;
  - switch the appliance on if it is empty - however, should the appliance be found empty during operation, immediately switch the ON/OFF Switch off, switch off the electric mains, unplug the power cable and wait for the appliance to cool. DO NOT add water when the water is dry-boiled (the glass may crack!);
  - press the ON/OFF Switch too forcefully;
  - leave the appliance unsupervised during operation.
16. During the period of heating/boiling, high temperature steam will be emitted from the Spout. To avoid scalding:

DO NOT:

- fill the appliance with hot water;
- fill the appliance with less than 50% & beyond the maximum volume indicated;
- allow all of the water to be boiled away;
- operate with the Lid open & ensure that the Lid is tightly closed during heating;

- touch any part of the appliance, except the Handle, ON/OFF Switch and power cable, when the appliance is filled with hot/boiling water. The Base and the bottom of the appliance become exceedingly hot as the appliance operates. Do note that the liquids & gases inside the appliance itself would still be very hot during heating, and for some time after the plug has been pulled out of the wall socket;
  - move the appliance using the Lid. Once boiling has completed, the power turned off, the power cable unplugged from the appliance as well as the wall socket, move the Kettle Jug containing hot water using the Handle carefully;
  - direct steam at any person or animal & one's hands and face should be angled away from the Spout.
17. During operation, DO NOT touch the appliance with wet body parts, and it is recommended to have between you and the standing surface, an isolating element (for example, wearing shoes with rubber soles).
  18. DO NOT soak the appliance in water or other liquids, wash it under the tap, or let any liquid flow into the internal casing of the appliance to prevent electric shock. In case of accidental fall in water, DO NOT try to take it out, but first of all switch the appliance off.
  19. Switch the appliance OFF before unplugging the appliance. Plug and unplug the power cable firmly holding it with dry hands. Always unplug the power cable before filling & emptying the appliance; to avoid overheating; if it is NOT used for a long period and before storing, cleaning or performing any maintenance operation. Prior to the latter, leave to cool for at least 30 minutes.
  20. In case of malfunction or anomaly during the functioning, switch off the appliance immediately, turn off the power and check the cause of the anomaly, if possible, with the support of a qualified person.
  21. If smoke is observed coming out of the appliance, unplug the power cable immediately.
  22. This appliance is NOT intended for commercial use but to be used in households and similar applications, such as:
    - Staff kitchen areas in shops, offices and other working environments;
    - By clients in dormitories hotels, motels and other residential environments;
    - Bed and breakfast type environment.
  23. This appliance can be used by children aged from 8 years and above and persons with reduced physical, sensory or mental capabilities or lack of experience and knowledge if they have been given supervision or instruction concerning use of the appliance in a safe way and understand the hazards involved. Children shall NOT play with the appliance. Cleaning and user maintenance shall NOT be made by children unless they are older than 8 and supervised. Keep the appliance and its cable out of reach of children less than 8 years old.
  24. Save these instructions.

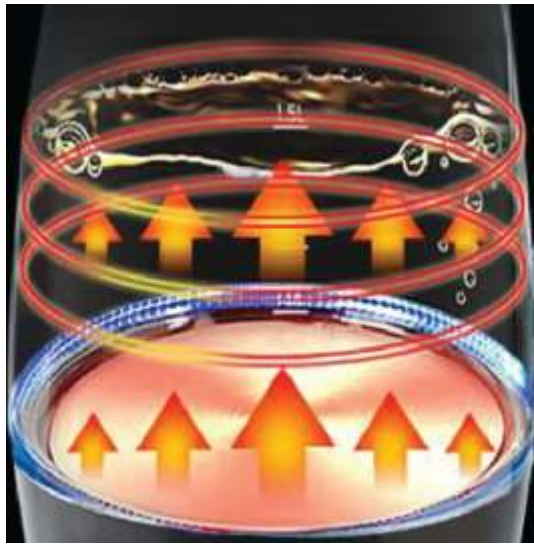
## How to use

### Filling Water

1. Switch the wall switch OFF and unplug the power cable from the wall socket when not in use and before filling, emptying and cleaning the appliance.
2. Fill the appliance by pressing the Lid Button down and filling the appliance with clean water to maximum capacity. DO NOT fill water lower than the minimum volume or higher than the maximum volume as indicated by the lines drawn on the Kettle Jug before boiling. Close the Lid tightly.
3. Wipe the exterior of the Kettle Jug & Base using a soft, dry cloth if water has spilled onto the appliance.

### Heating / Boiling Water

4. Place the Base on a dry, horizontal, stable and heat-resistant surface. Place the Kettle Jug onto the Base securely. Plug the power cable attached to the Base into the wall socket. Switch the wall socket ON. Press the ON/OFF Switch on the Handle down. The ON/OFF Switch Indicator Light turns on.
5. The boiling process commences. If the water level is below MIN, the Automatic Safety Cut-Off Function will be activated, which prevents heating. In this case, switch off the appliance and disconnect the power cable from the wall socket. Fill the Kettle Jug with more water until the water level exceeds the MIN line, but stays below the MAX line. Repeat points 3 – 5.
6. The appliance switches off automatically several seconds after water has started boiling. The ON/OFF Switch Indicator Light turns off.
7. The heating process can be terminated at any time by lifting the Kettle Jug away from the Base. However this is NOT recommended. You should:  
Press the ON/OFF Switch on the Kettle Jug up, switch the wall switch OFF and unplug the power cable from the wall socket.



### Re-boiling and Re-heating

8. Once the water has boiled, the ON/OFF Switch comes up and the ON/OFF Switch Indicator Light go out. Pressing the ON/OFF Switch down will not restart the heating process if the temperature sensing controller determines that the temperature of the water is not cool enough to require heating. Wait a few minutes before restarting the appliance.

**Temperature Sensor Control**

**Auto shut-off when water boils**

**Modernised dry boil protection**



## How to clean

1. Switch the wall switch OFF and unplug the power cable from the wall socket when not in use and before filling, emptying and cleaning the kettle.
2. Pour out any water contained in the appliance. Wait for the appliance to cool.
3. Wipe the exterior of the Kettle Jug & Base using a soft, damp cloth or sponge. Remove stubborn spots with a cloth moistened with mild liquid detergent.  
DO NOT use abrasive scouring pads or powders.
4. Never immerse the Kettle Body & Base in water or other liquids.
5. Wipe the appliance with a soft, dry cloth. DO NOT place the appliance under direct sunlight for drying.

### Descaling

From time to time, boiled scale deposit will naturally form on the heating element, thus reducing heating efficiency. The frequency of descaling depends on the quality of tap water in your region and the frequency of use of the kettle.

1. Fill the Kettle Jug to its maximum (MAX) volume using a mixture of one part ordinary vinegar and two parts water.
2. Boil the mixture following the normal procedure.
3. Leave the mixture in the Kettle Jug overnight, and discard it the next morning.
4. Fill the Kettle Jug to its maximum (MAX) volume with water.
5. Boil the water following the normal procedure.
6. Discard the boiled water to remove any remaining scale and vinegar.
7. Rinse the inside of the Kettle Jug with water.
8. The descaling is complete and the Kettle Jug is ready to be used.

## ENVIRONMENTAL TIP

This appliance, along with all other electronic appliances, should, when it is no longer capable of functioning, be disposed with the least possible environmental damage according to the local regulations in your area. In most cases you can discard the appliance at your local recycling centre.

**DISPOSAL:** Do not dispose this product as unsorted municipal waste. Collection of such waste separately for special treatment is necessary.



## SPECIFICATIONS

<b>MODEL</b>	<b>MC117</b>
<b>DIMENSIONS</b>	<b>21.8 x 14.8 x 24.5 cm / 8.6 x 5.8 x 9.6 inches</b>
<b>WEIGHT</b>	<b>0.9 kg / 2.0 lbs</b>
<b>VOLTAGE</b>	<b>220 – 240 V ~ 50 – 60 Hz</b>
<b>POWER</b>	<b>1850 W</b>
<b>CAPACITY</b>	<b>1.7 L</b>

## WARRANTY

### Warranty Conditions

1. This warranty provides against defective materials and manufacturing faults throughout for two years from the date of purchase of the appliance. The warranty on the Compressor is 10 years subject to the same conditions as above.
2. This warranty also does not cover normal wear and tear, replacement of consumable materials and accessories, and the cost of maintenance of the appliance.
3. This warranty does not cover the repair or replacement of part/s damaged by misuse, accidents, negligence, alterations, or modifications in any way, or repairs done by any repair organisation without the prior consent of PowerPac Electrical Pte Ltd.
4. Repair and service are to be performed at: 5 Changi South Lane #03-01 Singapore 486045. A transport fee will be charged for personal doorstep service.
5. The original purchaser of the appliance must furnish proof of purchase to our Service Centre with the email or number as registered during submission of warranty when this appliance is sent for repair/service. Failure to do so may delay the receipt of said repair/service by the customer.
6. Under no circumstances whatsoever shall the serial number be erased, defaced or altered by the customer and/or his representatives, or the dealer and/or his agents. Failure to ensure this shall invalidate the warranty.
7. This warranty is deemed to be void if the defect is caused by the attack of household pests, fire, lightning, natural disasters, pollution, abnormal voltage or the usage of generators.
8. This warranty is valid in Singapore only.
9. This warranty will be honoured subject to the customer's registration of the warranty inclusive of original invoice or valid purchase receipt. Failure to present these documents will result in denial of service. However, if the customer still requests that the defective appliance be repaired, PowerPac Electrical Pte Ltd may, at its discretion, repair the appliance but impose a labour charge, as well as the costs of the replacement parts, to be borne solely by the customer.
10. Please refer to the attached picture for the location of one of our appliance's serial number, as an example.



Please complete the on-line registration warranty form available on our website. There is no further requirement to send us any hard copy as part of our efforts to save the environment.

In accordance with the terms and conditions of this limited warranty as stated above, PowerPac Electrical Pte Ltd, at its expense shall provide free services for the appliance within the warranty period from its date of purchase from our Authorised dealers.