



# 2IN1 BLENDER

Model: PPBL300A



PowerPac Electrical Pte Ltd

✉ [sales@powerpac.com.sg](mailto:sales@powerpac.com.sg)

📘 PowerPacSG

🌐 [www.powerpac.com.sg](http://www.powerpac.com.sg)

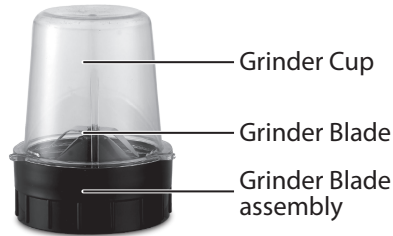
🎵 @powerpacsg



WE ARE OFFERING A  
15% OFF STOREWIDE FOR  
YOUR NEXT PURCHASE AT  
[WWW.POWERPAC.COM.SG](http://WWW.POWERPAC.COM.SG)

CODE  
**THANKYOU15**

# PARTS & DESCRIPTION



## WARNINGS

### ATTENTION :

Read this booklet carefully as it contains important instructions for a safe installation, use and maintenance. Important instructions to be kept for future reference.

The following basic precautions should always be followed when using electrical appliances:

1. Read all instructions before using the appliance.

### The Appliance

2. This appliance must be used only for the purpose it was expressly designed; any use NOT complying with the instructions contained in the manual is considered inappropriate and dangerous. The manufacturer is NOT responsible for possible damages caused by the inappropriate and/or unreasonable use.
3. The installation/assembly of the appliance will be made in accordance with the indications of the manufacturer. A wrong procedure may cause damages to persons, animals or objects, for which the manufacturer cannot be considered responsible.
4. Before use, check the integrity of the appliance and power cable. DO NOT operate the appliance at all when the Motor unit is damaged. If the Motor unit is not damaged, but an accessory (Blender Jug, Grinder Cup, Blender Blade assembly or Grinder Blade assembly) is damaged, DO NOT operate the Motor unit in conjunction with that accessory. In case you are not sure, contact a qualified person. If the power cable is damaged, it must be replaced by the manufacturer / service agent or a qualified technician in order to avoid a shock hazard.
5. Before powering the appliance make sure the rating (voltage and frequency) corresponding to the grid and the socket is suitable for the plug of the appliance, and that the wall socket is properly grounded. This appliance is fitted with an earth wire for extra safety.
6. DO NOT power the appliance using multiple sockets. If possible, avoid the use of adapters and/or extension cables; if their use is absolutely necessary, use only materials in compliance with the current safety regulations and whose marked electrical rating should be at least as high as the electrical rating of the appliance. To prevent overloading and blown fuses, ensure that no other high powered appliance is plugged into the same socket.
7. The appliance must NOT be switched on using external timers and/or other remote control appliances which are not specified in this manual.
8. Only use original components & accessories provided by the manufacturer. Any non-original components & accessories made by other manufacturers or by the same manufacturer but for other models of the same capacity or otherwise, may cause injuries to persons or damage to the appliance. Doing so will void the warranty and may cause serious injury.
9. The packing materials (plastic bags, expanded polystyrene, etc.) must be kept out of the reach of children or disabled persons since they represent potential sources of danger.

### Location

10. This appliance is NOT suitable to be used or stored near heat sources (open flame, ovens, heaters, stoves, etc.) and/or in an explosive environment (in the presence of flammable substances such as gas, vapour, mist or dust, in atmospheric conditions when, after ignition, the combustion is spread in the air). Items containing these substances should never be placed in the appliance, and never be used to clean the appliance to avert the risk of fire or explosion.
11. Place the appliance at a proper distance from the objects or surrounding walls making sure that its functioning will not cause accidental damages. The appliance should NOT be placed on a surface, or in the vicinity of objects, which can be damaged by heat such as carpets or plastics. Never use the appliance near curtains or textiles. If the appliance is operated on wooden furniture, use a protective pad to prevent damage to delicate finishes.
12. Avoid placing the power cable on abrasive or sharp surfaces or in positions where it can be damaged easily. Avoid placing heavy objects on the cable. The cable must NOT be placed under carpets, or covered with throw rugs, runners or similar. Arrange the cable away from the high traffic area, and where it will NOT be tripped over. DO NOT pull or carry the appliance by the cable.
13. DO NOT use or store the appliance outdoors. Store and use the appliance only indoors, or in any case, protected from weathering such as rain, direct radiation of the sun and dust.

## Operation

14. If you are using the appliance for the first time, you should:

a. Clean the exterior of the Motor unit with a damp cloth. Use a little detergent, if necessary, and wipe dry. The Motor unit may NOT be immersed in water. Wash the Cap, Lid, Blender Jug & Blender Blade assembly, Grinder Cup & Grinder Blade assembly, and utensils you wish to use with water & detergent with a non-abrasive sponge. DO NOT use metal scouring pads nor use solvents like paint thinners or acetone. Dry the accessories thoroughly.

**Notice:** you should NOT use a dishwasher to clean the appliance.

b. Place the Motor unit on a flat, dry surface. Assemble the Blender Jug & the Blender Blade assembly or Grinder Cup & Grinder Blade assembly to the Motor unit according to the instructions listed in the section ("How to Use") below. Check that these accessories are locked into the Motor unit before you start using the appliance.

c. Make sure the blades are in place and are running smoothly.

### The Blender

d. Attach the Blender Blade assembly to the Blender Jug by turning it anti-clockwise to the Blender Jug. Place food/liquids into the Blender Jug. Screw the Lid to the Blender Jug by turning clockwise. Insert the Cap into the Lid and press downwards. Place the filled Blender Jug (with the Blender Blade assembly) on top of the Motor unit. Press the Blender Jug downwards. Rotate slightly for the Blender Blade assembly to lock in place. Plug in the power cable, switch it on, rotate the ON/OFF & Speed Rotary Knob to '1' or '2' and blend.

**Blend for NOT more than 1 minute without interruption, resting for 2 minutes with a maximum of 3 cycles before resting for 15 minutes.**

On completion of blending, rotate the ON/OFF & Speed Rotary Knob to '0' (OFF), switch the wall switch off and unplug the power cable. Wait for the blades to stop turning and rotate slightly for the Blender Blade assembly to unlock from the Motor unit. Lift the Blender Jug out of the Motor unit.

### The Grinder (functions as a Mincer as well)

e. Place ingredients (except Nutmeg) into the inverted Grinder Cup, screw the Grinder Blade assembly clockwise. Place the filled Grinder Cup (with the Grinder Blade assembly) on top of the Motor unit. Press the Grinder Cup downwards. Rotate slightly for the Grinder Blade assembly to lock in place. Plug in the power cable, switch it on, rotate the ON/OFF & Speed Rotary Knob to '1' or '2' and grind.

**Grind for NOT more than 30 seconds without interruption, resting for 2 minutes with a maximum of 3 cycles before resting for 15 minutes.**

On completion of grinding, rotate the ON/OFF & Speed Rotary Knob to '0' (OFF), switch the wall switch off and unplug the power cable. Wait for the blades to stop turning and rotate slightly for the Grinder Blade assembly to unlock from the Motor unit. Lift the Grinder Cup out of the Motor unit. Invert the Grinder Cup and unscrew the Grinder Blade assembly clockwise from the Grinder Cup and detach.

Make sure to remove any label or protective sheet which may prevent its proper functioning.

### DO NOT:

- cover the appliance during functioning;
- use while you are tired or sleepy;
- insert objects or body parts inside the protection cover of the appliance;
- overload the Blender Jug or Grinder Cup by overfilling it. This is generally below  $\frac{3}{4}$  of the total volume of the container as especially during blending, liquids will churn and may spill out of the container. The jug should contain cut fruits and vegetables NO larger than 1 inch (2.5 cm) in length and thickness and must NOT contain dry food (food with insufficient amount of water, very hard ingredients (such as coffee beans, soybeans, rice, ice cubes or frozen foods), or foods or liquids with a temperature greater than 80°C;
- allow hands, hair, clothing, curtains, spatulas and any other objects to come into contact with the appliance's motor and accessories to avoid personal injury or damage to the machine when the appliance is in operation;
- place the appliance in the microwave oven or refrigerator to avoid damaging it;
- touch the blades as they are VERY SHARP! Hold the base of the Blender Blade assembly or Grinder Blade assembly while installing, removing or cleaning;
- **operate the appliance for more than 1 minute for blending and 30 seconds for grinding or mincing without interruption. Let the appliance rest between processing cycles for 2 minutes. After 3 processing cycles, allow an interval of 15 minutes to let the appliance cool down before the next use so as to prolong its service life. DO NOT allow the appliance to idle while in operation;**

- rotate the ON/OFF & Speed Rotary Knob too forcefully so as to avoid any damage;
  - detach the Blender Jug or Grinder Cup while the appliance is in operation;
  - leave the appliance unsupervised during operation.
15. During operation, DO NOT touch the appliance with wet body parts, and it is recommended to have between you and the standing surface, an isolating element (for example, wearing shoes with rubber soles).
  16. DO NOT soak the Motor unit in water or other liquids, wash it under the tap, or let any liquid flow into the internal casing of the appliance to prevent electric shock. In case of accidental fall in water, DO NOT try to take it out, but first of all switch the appliance off.
  17. Switch the appliance OFF before unplugging the appliance. Plug and unplug the power cable firmly holding it with dry hands. Always unplug the power cable before changing accessories; to avoid overheating; if it is NOT used for a long period and before storing, cleaning or performing any maintenance operation. Remember that the blades may still be moving after the power cable is unplugged! Prior to the latter, leave to cool for at least 10 minutes.
  18. Wash the Cap, Lid, Blender Jug & the Blender Blade assembly, Grinder Cup & Grinder Blade assembly, and utensils immediately after usage to avoid build-up of bacteria.  
**(Warning: Blades are sharp!).**
  19. In the event the mixing of the food items produce bubbles, stop the operation immediately and wait until the production of bubbles ceases before resuming blending.
  20. In case of malfunction or anomaly during the functioning such as smoke coming out of the appliance, switch the appliance off immediately, turn off the power and check the cause of the anomaly, if possible, with the support of a qualified person.
  21. This appliance is NOT intended for commercial use but to be used in households and similar applications, such as:
    - Staff kitchen areas in shops, offices and other working environments;
    - By clients in dormitories hotels, motels and other residential environments;
    - Bed and breakfast type environments.
  22. This appliance can be used by children aged from 8 years and above and persons with reduced physical, sensory or mental capabilities or lack of experience and knowledge if they have been given supervision or instruction concerning use of the appliance in a safe way and understand the hazards involved. Children shall NOT play with the appliance. Cleaning and user maintenance shall NOT be made by children unless they are older than 8 and supervised. Keep the appliance and its cable out of reach of children less than 8 years old.
  23. Save these instructions.

### **Safety Protection**

*In case of overloading of Blender Jug, the Motor unit will stop operating. Press the ON/OFF & Speed Rotary Knob to '0' (OFF), switch the wall switch off and unplug the power cable from the wall socket. Allow the appliance to cool for at least 30 minutes (or until the appliance has returned to room temperature) before using the appliance. Meanwhile, remove some food items from the Blender Jug, If either the Blender Jug, Grinder Cup or Chopper Cup is not locked in place, the Motor unit will not operate until the accessory is locked in place.*

## HOW TO USE

Clean the Motor unit and accessories before using. Refer to the section "How to clean and maintain" immediately following this section.

Place the Base of the Motor unit on a flat, dry and heat-resistant surface.

### The Blender

1. Attach the Blender Blade assembly to the Blender Jug by turning it anti-clockwise until it is securely (but NOT overly) tightened to the Blender Jug. This is to prevent the thread lining the bottom of the Blender Jug from being stripped away. If that happens, the Blender Jug and Blender Blade assembly would not have a watertight fit.
2. Wash the fruit/s and/or vegetables, then peel and cut into no larger than 1 inch (2.5 cm) cubes. Add liquids such as water or milk, then place the cut fruits or vegetables into the Blender Jug with the, topped off with yoghurt or ice cream if desired. Place small portions into the Jug bit by bit instead of blending all at once. You can pause blending, remove the Cap, add fresh ingredients, replace the Cap and continue blending. The total volume should NOT exceed the MAX mark.

**Note:** For optimal performance, place the ingredients in the Blender Jug according to the following sequence:

Liquids, fresh ingredients, frozen fruits, yoghurt, ice cream.

3. ① Lock the Lid into place on the Blender Jug and ensure that it is secure.  
② Insert the Cap into the Blender Jug and press downwards to lock in place. (see figure below on the left)
4. ① Place the filled Blender Jug (with the Blender Blade assembly) on top of the Motor unit. Press the Blender Jug downwards. Rotate slightly for the Blender Blade assembly to lock in place.
5. Set the ON/OFF & Speed Rotary Knob to '0' (OFF). Plug the power cable into the wall socket and switch ON. Rotate the ON/OFF & Speed Rotary Knob to '1' or '2' and blend until the desired consistency is achieved. No matter whether at Speeds to '1' or '2'; rotating and holding the ON/OFF & Speed Rotary Knob at 'P' (Pulse) will produce a short burst at maximum speed. When the ON/OFF & Speed Rotary Knob at 'P' (Pulse) is released, it will return to the original speed. For blending solid or very thick liquid ingredients, use the Blender in 'P' (Pulse) mode to prevent the blades from becoming stuck.  
Place one hand on top of the Lid when blending to stabilise the appliance. DO NOT operate the appliance for more than 1 minute without interruption. Let the appliance rest for 2 minutes between processing cycles. After 3 processing cycles, allow an interval of 15 minutes to let the appliance cool down before the next use, so as to prolong its service life. DO NOT allow the appliance to idle while in operation.
6. When blending has completed, rotate the ON/OFF & Speed Rotary Knob to '0' (OFF), switch the wall switch off and unplug the power cable.
7. Wait for the blades to stop turning. Rotate slightly for the Blender Blade assembly to unlock from the Motor unit. Lift the Blender Jug out of the Motor unit.



only if a Jam occurs: DO NOT continue blending if the blade is jammed.

Set the ON/OFF & Speed Rotary Knob to '0' (OFF).

Switch the wall switch off and unplug the power cable.

Wait for the blades to stop turning.

Detach the Lid from the Blender Jug by turning it anti-clockwise. Clear the jam.

(Occasionally, the blockage may require that the Blender Jug be detached from the Motor unit before clearing. Rotate slightly for the Blender Blade assembly to unlock from the Motor unit and detach. See step 7).

Once the Jam is cleared, (re-attach the Blender Jug with the Blender Blade assembly to the Motor unit), re-attach the Lid to the Blender Jug and turn it clockwise until it is locked in place.

Perform steps 4 – 7 again.

### The Grinder (Mincer)

(used for grinding dry and hard foodstuffs: spices, coffee beans, seeds, almonds, etc. and mincing meat, garlic, ginger, onions, chillies, etc.)

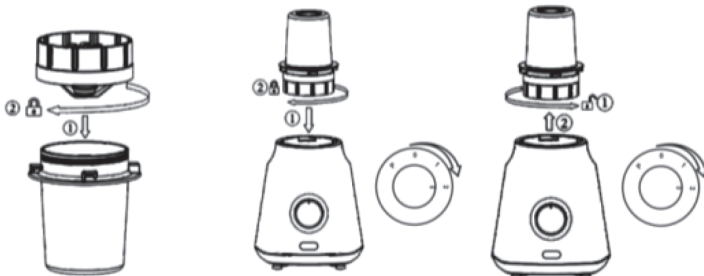
1. Separate the Grinder Blade assembly from the Grinder Cup.
2. With the mouth of the Grinder Cup facing upwards, place food ingredients into the Grinder Cup.
3. ① Place the Grinder Blade assembly on top of the Grinder Cup.  
② Attach the Grinder Blade assembly to the Grinder Cup by turning it clockwise until it is securely (but NOT overly) tightened to the Grinder Cup.
4. ① Place the Grinder Cup (with the Grinder Blade assembly) containing food ingredients on top of the Motor unit.  
Press the Grinder Cup downwards. Rotate slightly for the Grinder Cup assembly to lock in place.
5. Set the ON/OFF & Speed Rotary Knob to '0' (OFF). Plug the power cable into the wall socket and switch ON. Rotate the ON/OFF & Speed Rotary Knob to '1' or '2' and grind until the desired consistency is achieved.

No matter whether at Speeds '1' or '2', rotating and holding the ON/OFF & Speed Rotary Knob at 'P' (Pulse) will produce a short burst at maximum speed. When the ON/OFF & Speed Rotary Knob at 'P' (Pulse) is released, it will return to the original speed.

For grinding very hard ingredients, use the Grinder in 'P' (Pulse) mode to prevent the blades from becoming stuck.

**Place one hand on top of the Grinder Cup when grinding or mincing to stabilise the appliance. DO NOT operate the appliance for more than 30 seconds without interruption. Let the appliance rest for 2 minutes between processing cycles. After 3 processing cycles, allow an interval of 15 minutes to let the appliance cool down before the next use, so as to prolong its service life. DO NOT allow the appliance to idle while in operation.**

6. When grinding or mincing has completed, rotate the ON/OFF & Speed Rotary Knob to '0' (OFF), switch the wall switch off and unplug the power cable. Switch off the wall switch and unplug the power cable.
7. Wait for the blades to stop turning.  
Rotate slightly for the Grinder Blade assembly to unlock from the Motor unit and detach. Lift the Grinder Cup out of the Motor unit.
8. Invert the Grinder Cup with the Grinder Blade assembly, ① turn the Grinder Blade assembly clockwise from the Grinder Cup and ② detach. The grinded/minced food is left inside the inverted Grinder Cup.



only if a Jam occurs: DO NOT continue blending if the blade is jammed.

Set the ON/OFF & Speed Rotary Knob to '0' (OFF).

Switch the wall switch off and unplug the power cable.

Wait for the blades to stop turning.

Rotate slightly for the Grinder Blade assembly to unlock from the Motor unit and detach

Lift the Grinder Cup out of the Motor unit. (see step 7)

Invert the Grinder Cup with the Grinder Blade assembly, ① turn the Grinder Blade assembly clockwise from the Grinder Cup and ② detach. (see step 8). Clear the jam.

Once the Jam is cleared, perform steps 3 – 8 again.



## HOW TO CLEAN AND MAINTAIN

1. On the completion of blending, grinding or mincing, rotate the ON/OFF & Speed Rotary Knob to '0' (OFF), switch the wall switch off and unplug the power cable.
2. Before cleaning, please make sure the blades have stopped running.
3. Clean the Motor unit with a damp cloth. DO NOT immerse the Motor unit in water or other liquids, and avoid spraying water, in order to avoid damage or leakage.
4. Wash the Cap, Lid, Blender Jug & the Blender Blade assembly, Grinder Cup & Grinder Blade assembly, and utensils before and after use with water & detergent with a non-abrasive sponge to avoid build-up of bacteria. Blades are sharp! Dry the components with a soft, dry cloth. **DO NOT** use a steel wire sponge, abrasive cleaners or corrosive liquids such as gasoline or acetone to clean the appliance & accessories.  
Never attempt to sterilise any part of this appliance with hot water or steam by utilising a steamer, frying pan, oven, microwave oven, kettle, etc.
5. Ensure that the appliance & accessories are clean, dry, and placed in dry and well-ventilated storage. Avoid direct sunlight.
6. Reassemble the Blender Blade assembly to the Blender Jug, Grinder Blade assembly to the Grinder Cup and then place the Blender Jug onto the Motor unit before storing.

### Auto Clean

7. Place the Blender Jug (with the Blender Blade assembly) on top of the Motor unit.
8. Press the Blender Jug downwards. Rotate slightly for the Blender Blade assembly to lock in place
9. Fill the Blender Jug with warm water.
10. Attach the Lid to the Blender Jug and turn it clockwise until it is locked in place.
11. Insert the Cap into the Lid by firmly pressing it downwards.
12. Plug the power cable into the wall socket and switch ON. Rotate the ON/OFF & Speed Rotary Knob to '2'.
13. Rotate and hold the ON/OFF & Speed Rotary Knob at 'P' (Pulse) for a few seconds to clean the Blender Jug and Blender Blade assembly very quickly and safely.
14. Rotate the ON/OFF & Speed Rotary Knob to '0' (OFF), switch the wall switch off and unplug the power cable.
15. Wait for the blades to stop turning. Rotate slightly for the Blender Blade assembly to unlock from the Motor unit and detach. Lift the Blender Jug out of the Motor unit.
16. Detach the Lid from the Blender Jug by turning it anti-clockwise.
17. Wash the Cap, Lid, Blender Jug & the Blender Blade assembly.

## PROBLEM SOLVING

Fault symptom	Cause analysis	Troubleshooting
After the Blender Jug or Grinder Cup installed, the appliance does not work after pressing the switch	Safety lock is not connected	Reconnect the Motor unit and the Blender Jug or Grinder Cup
	The motor is damaged or stuck	Turn the motor shaft. If it still does not work, please send to the nearest service centre for inspection
	Check if the power cable is loose.	If the appliance still does not work, replace with a new power cable
When using the appliance for the first few times, the motor gives off an unpleasant smell	It is a normal phenomenon when a new motor is initially used	The smell will disappear with use
The blades get stuck	The blades are entangled or stuck by ingredients	Remove the Blender Jug or Grinder Cup, take out the ingredients and cut the ingredients into smaller pieces or remove some ingredients Refer to "only if a Jam occurs" in "How to Use" section for step-by-step instructions
The appliance stops working after a few processing cycles	The motor was not given enough time to cool down between processing cycles / the motor was allowed to idle while in operation	Wait half an hour before using the appliance. If it still does not work, please send to the nearest service centre for inspection.  <b>This is NOT covered by Warranty</b>

## **SPECIFICATION**

**MODEL**

**PPBL300A**

**RATED VOLTAGE**

**220-240V~**

**FREQUENCY**

**50/60 Hz**

**POWER**

**400W**

**CAPACITY**

**1.5L**

## ENVIRONMENTAL TIP

This appliance, along with all other electronic appliances, should, when it is no longer capable of functioning, be disposed with the least possible environmental damage according to the local regulations in your area. In most cases you can discard the appliance at your local recycling centre.

**DISPOSAL:** Do not dispose this appliance as unsorted municipal waste.

Collection of such waste separately for special treatment is necessary.

### **Risk of child or animal entrapment**

Before you discard this appliance, please remove all doors and leave the shelves inside so that children or animals may not easily get trapped inside.

## WARRANTY

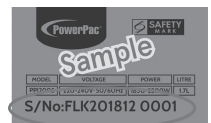
### **Warranty Conditions**

1. This warranty provides against defective materials and manufacturing faults throughout for two years from the date of purchase of the appliance covering the Motor only, subject to correct usage of the appliance. The warranty on the Compressor is 10 years; fluorescent light tubes of Mosquito Insect Repellents is 6 months; rechargeable batteries are also 6 months; all are subject to the same conditions as above.
2. This warranty also does not cover normal wear and tear, replacement of consumable materials and accessories, and the cost of maintenance of the appliance.
3. This warranty does not cover the repair or replacement of part/s damaged by misuse, accidents, negligence, alterations, or modifications in any way, or repairs done by any repair organisation without the prior consent of PowerPac Electrical Pte Ltd.
4. Repair and service are to be performed at: 5 Changi South Lane #03-01 Singapore 486045. A transport fee will be charged for personal doorstep service.
5. The original purchaser of the appliance must furnish proof of purchase to our Service Centre with the email or number as registered during submission of warranty when this appliance is sent for repair/service. Failure to do so may delay the receipt of said repair/service by the customer.
6. Under no circumstances whatsoever shall the serial number be erased, defaced or altered by the customer and/or his representatives, or the dealer and/or his agents. Failure to ensure this shall invalidate the warranty.
7. This warranty is deemed to be void if the defect is caused by the attack of household pests, fire, lightning, natural disasters, pollution, abnormal voltage or the usage of generators.
8. This warranty is valid in Singapore only.
9. This warranty will be honoured subject to the customer's registration of the warranty inclusive of original invoice or valid purchase receipt. Failure to present these documents will result in denial of service. However, if the customer still requests that the defective appliance be repaired, PowerPac Electrical Pte Ltd may, at its discretion, repair the appliance but impose a labour charge, as well as the costs of the replacement parts, to be borne solely by the customer.
10. Please refer to the attached picture for the location of one of our appliance's serial number, as an example.

*Please complete the on-line registration warranty form available on our website. There is no further requirement to send us any hard copy as part of our efforts to save the environment. In accordance with the terms and conditions of this limited warranty as stated above, PowerPac Electrical Pte Ltd, at its expense shall provide free services for the appliance within the warranty period from its date of purchase from our Authorised dealers.*



E-Register scan





*Thank  
you!*  
*for your  
purchase*

CODE  
**THANKYOU15**

WE ARE OFFERING A  
**15% OFF STOREWIDE FOR  
YOUR NEXT PURCHASE AT  
[WWW.POWERPAC.COM.SG](http://WWW.POWERPAC.COM.SG)**



**TERMS AND CONDITIONS**

One time usage with minimum spend of \$30

This promo code is valid within 3 months for purchases made through [powerpac.com.sg](http://powerpac.com.sg)  
This promo code cannot be applied with any promotions, offers and privileges, unless otherwise stated.\*

\*We reserve the right to modify, cancel and limit any promotion or offer.  
In case of any dispute, our company reserves the rights of final and conclusive decision.

THIS IS HOME TRULY

# E Warranty Registration

Please complete the on-line registration warranty form below. There is no further requirement to send us any hard copy as part of our efforts to save the environment.

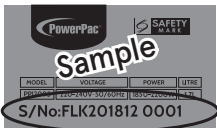
In accordance with the terms and conditions of this limited warranty as stated below, PowerPac Electrical Pte Ltd, at its expense shall provide free services for the appliance within the warranty period from its date of purchase from our Authorised dealers.

This warranty will be honoured subject to the customer's registration of the warranty inclusive of original invoice or valid purchase receipt. Failure to present these documents will result in denial of service. However, if the customer still requests that the defective appliance be repaired, PowerPac Electrical Pte Ltd may, at its discretion, repair the appliance but impose a labour charge, as well as the costs of the replacement parts, to be borne solely by the customer

E-Register scan



Product Serial No



Refer rating label at bottom of product

 follow us on  
face book

PowerPacSG 

 follow us on  
tiktok

@powerpacsg 



 Tanah Merah Stn Exit B »» Bus No. 2/9/48(Stop ID: 85091)  
»» 5 min (4 stops) »» Bef Changi Fire Stn (Stop ID: 85071)  
»» Walk About 6 min, 500m

 Simei MRT »» Bus No. 9 (Stop ID: 85079)»» 6 min (3 stops)  
»» Flextronic (Stop ID: 96161) »» Walk About 6 min, 500m

## OFFICE / SERVICE CENTER

PowerPac Electrical Pte Ltd

Tel: 6214 9555

Address: 5 Changi South Lane, #03-01 S(486045)